

MAIN TOWER

LOTTE HOTEL SEOUL

General Information

Name	LOTTE HOTEL SEOUL Main Tower		
Opening	1979. 3. 10		
Location	30, Eulji-ro, Jung-gu, Seoul, Korea		
TEL · FAX	T +82.2.771.1000 / F +82.2.759.8049		
Website	www.lottehotel.com		
Rooms	737 Rooms (41 Suite Rooms)		
Dining	La Seine (Buffet), Mugunghwa (Modern Korean), Toh Lim (Chinese), Momoyama (Japanese), Peninsula Lounge & Bar (Lobby Lounge), Delica-Hans (Bakery & Deli), In Room Dining 24 Hours		
Facilities	14 Banquet Rooms, 7 Business Meeting Rooms, Fitness Club, Sulwhasoo Spa, Hotel Museum, LOTTE Hotel Gallery, Duty Free Shop		
Transportation	Subway	Line 2 - Euljiro (Exit 8, 1 min. walk), Line 1 - City Hall (Exit 5, 10 min. walk)	
	Bus	Bus Stops at ‘LOTTE Department Store’, ‘LOTTE Young Plaza’, ‘Myeong-dong KB Kook-min Bank’	

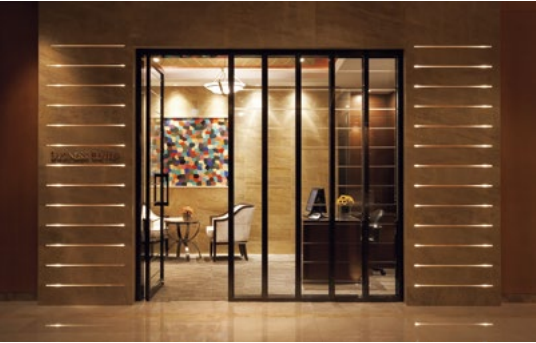
Guest Rooms



Room Type	Area (㎡)	Number
Superior	27 ~ 31	451
Deluxe	40 ~ 46	136
Club Floor	27 ~ 46	109
Junior Suite	54 ~ 62	27
Deluxe Suite	80 ~ 92	11
Presidential Suite	123	2
Royal Suite	354	1
Total		737

Services and Amenities

31F	Club Lounge	Dining & Beverage Service Breakfast Buffet 06:30 ~ 10:00, Afternoon Tea 15:00 ~ 17:00, Happy Hour 18:00 ~ 20:00 * All day Refreshments & Beverages 06:30~22:00
		Free Use of Meeting Room up to 2 Hours for Club Floor Guests (6 or 10 People)
	Meeting & Dining	Business Meeting Rooms (4 Rooms, 31F)
		Banquet Rooms (2 Grand Ballrooms, 3 Medium-sized Rooms, 9 Small-sized Rooms)
		Restaurants : La Seine, Peninsula Lounge & Bar, Delica-Hans (1F) / Toh Lim (37F) / Momoyama, Mugunghwa (38F)



Reservation & Inquiries

Room	T +82.2.759.7311~5	F +82.2.759.8049	E rsv.hotel.seoul@lotte.net
Banquet	T +82.2.317.7211~3	F +82.2.778.4016	E sbanquet@lotte.net
MICE	T +82.2.759.7507	F +82.2.759.8049	E seoulmice@lotte.net